

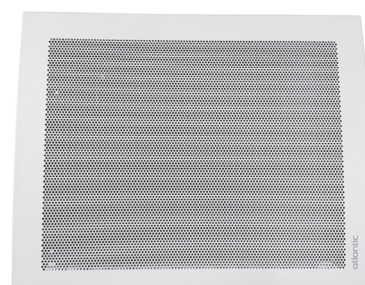
Solius WiFi

Radiant heat panel with weekly programming and homogeneous heat spread



RADIANT HEAT PANEL

MODELS 1000 TO 2000W



+ COMFORT

- Instantaneous feeling of warmth & even heat distribution
- Radiant heat panel and a blackpainted, extruded-aluminium heating element and wide heating surface

+ DESIGN

- Upscale and modern design that easily blends in with any home interior
- Stamped front air outlet
- Available model:
 - ☐ Horizontal
 - ☐ Colour:
 - ☐ White (RAL 9016)

+ INSTALLATION

- Extremely safe thanks to Class II, IP 24 protection and dual electric insulation
- Easy to install: H-shaped vertical support
- Supplied complete with feet kit and plug (optional)*

+ ENERGY SAVINGS

- High-precision electronic thermostat
- Weekly programming on a free daily basis (day per day/hour per hour)
- Open window detection
- High precision electronic thermostat



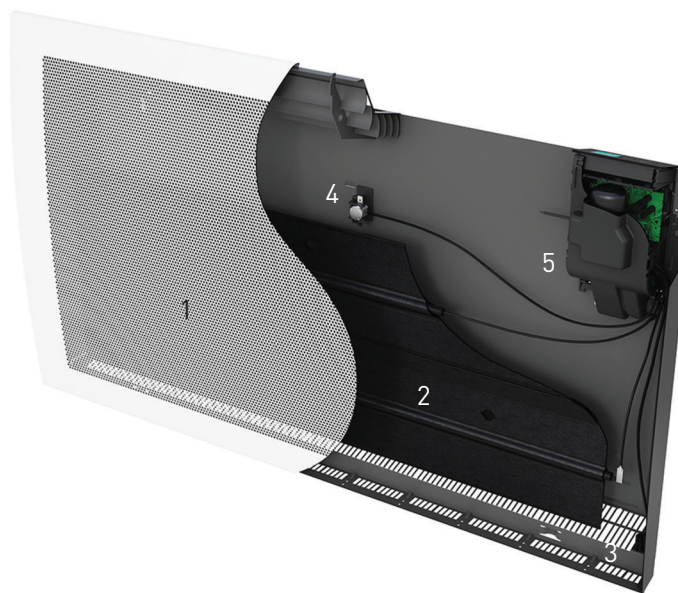
+ USER-FRIENDLY

- Digital display with 3 heating modes : Eco/ Comfort/ Prog

- Comfort mode: temperature can be regulated from 12°C to 28°C/ at 7°C (anti-frost)/OFF
- Eco mode: temperature can be regulated from 10°C to 19°C/ at 7°C (anti-frost)/OFF
- Prog mode: adjustable temperature setting per day & hour



- 1 Perforated front air outlet
- 2 EXTRUDED ALUMINIUM HEATING ELEMENT
- 3 Room temperature sensor
- 4 OVERHEATING SAFETY DEVICE
- 5 Anti-tilt sensor



Technical specifications

Output (W)	Dimensions (mm)						Net weight (kg)
	Width (W)	Height (H)	Depth (D)	A	B1	B2	
1000	601	470	130	343	256	158	5.2
1500	823	470	130	565	256	158	6.7
2000	1045	470	130	787	256	158	10

CE Class II IP 24

